



Morris County Mosquito Extermination Commission
PO Box 405 Morris Plains, NJ 07950
Phone: 973-285-6450 Fax 973-285-6454
www.morrismosquito.org

Biology

A mosquito requires standing water to go from an egg to an adult. There are 38 species of mosquitoes in Morris County and 63 in the state of New Jersey. Understanding the biology of the mosquito life cycle and learning where the mosquito populations are help in controlling mosquitoes.

Life Cycle

A mosquito lays her eggs in standing water or an area that will eventually flood. The mosquito goes through complete metamorphosis from egg, 4 larval stages or instars, pupae to an adult in about 5 days.

Only a female mosquito requires a bloodmeal. She uses the protein from the blood to nourish her eggs.

Surveillance

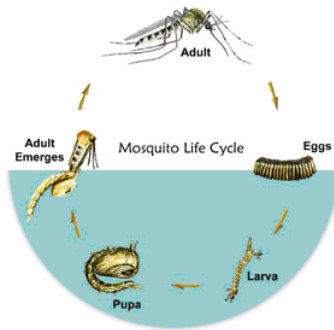
A series of light traps are set up throughout the county and collected on a weekly basis to monitor mosquito activity.

Gravid traps and CDC traps are also placed around the county to monitor mosquitoes and disease activity. A light bulb is used to attract mosquitoes to a light trap. Carbon dioxide is the attractant in a CDC trap. A very pungent mix of water and decaying grass called stink water is used to attract gravid or female mosquitoes with eggs in a gravid trap.

Habitat

Mosquitoes need standing water to begin their lifecycle. Almost any stagnant water makes good habitat for mosquitoes. Backyard habitat includes containers, flower pots, tires, tarps, and birdbaths. Natural habitats include woodland pools, swamps, and floodplains. Catch basins, stormwater facilities, ditches, and even some ponds also make great mosquito habitat.

Look around your yard and see if you can find mosquito larvae.



Control Strategies

Control methods vary based on the habitat, number and species of mosquito. Water management is done on streams, rivers, ditches, and ponds to create inhospitable areas for mosquito larvae. Fish are stocked in isolated areas to control mosquito populations by feeding on larvae. Larvicides are used on the ground and by air with a helicopter. Adulticides are used to control mosquitoes if populations are too large to control as larvae.