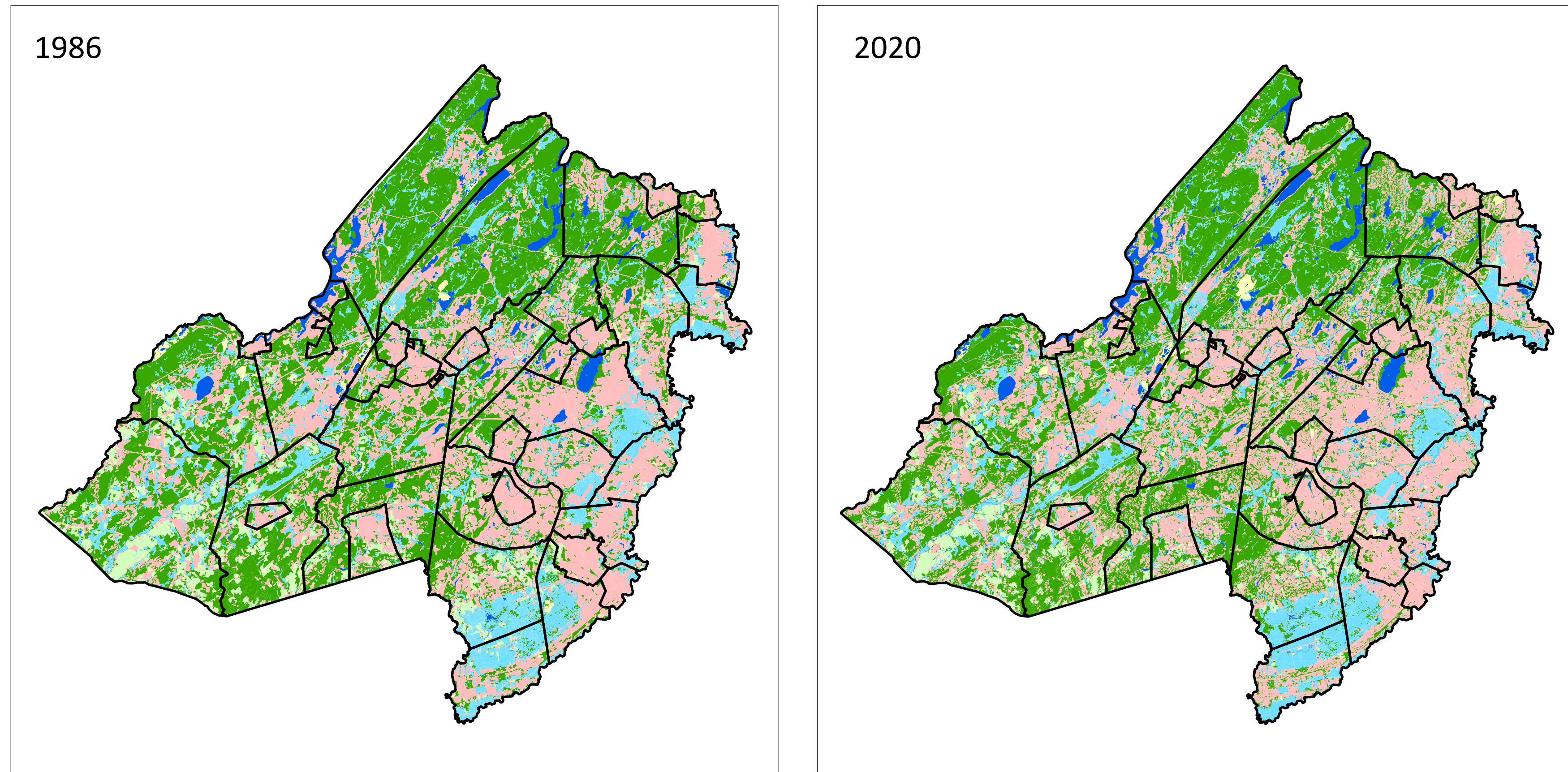


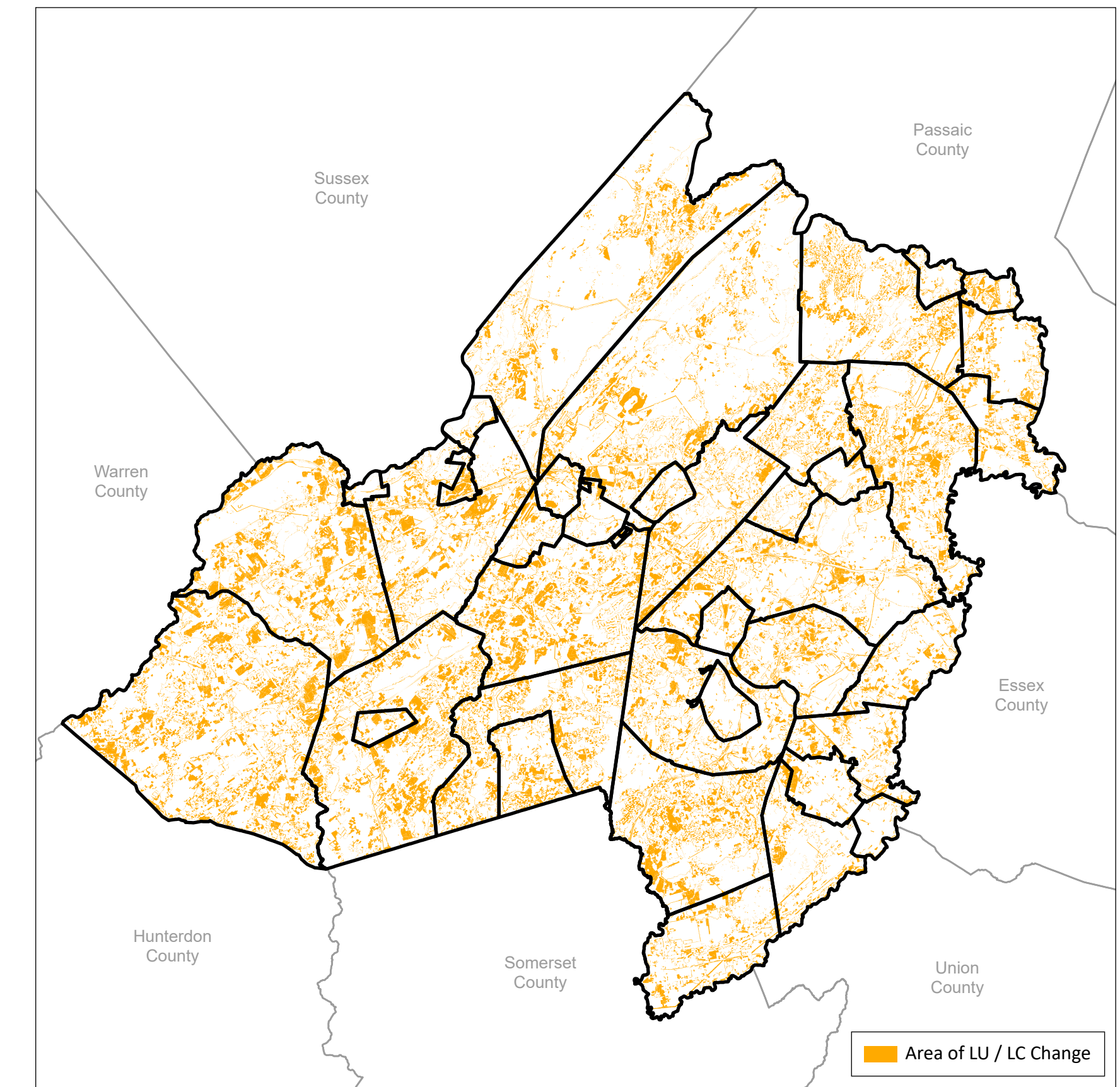
NJDEP Land Use / Land Cover 1986 - 2020 for Morris County



Land Use / Land Cover 1986 - 2020



Land Use / Land Cover Changes 1986 - 2020



■ Agriculture
■ Barren Land
■ Forest
■ Urban
■ Water
■ Wetlands

Mapping of this data by the NJDEP began in 1986. Between 1986 and 2020 (2), significant changes were recorded, most notably the relation between urban lands and agricultural.

NJDEP Land Use / Land Cover 1986-2020 and Land Use Change

Percentages	1986	1995	2002	2007	2012	2015	2020
Agriculture	5.9%	4.8%	4.3%	4.3%	3.8%	3.8%	3.7%
Barren	1.0%	1.0%	1.1%	1.1%	0.8%	0.8%	0.8%
Forest	42.1%	41.0%	40.2%	39.8%	38.6%	38.6%	38.4%
Urban	33.6%	35.3%	36.7%	37.2%	39.2%	39.2%	39.6%
Water (3)	3.3%	3.3%	3.4%	3.6%	3.7%	3.6%	3.7%
Wetlands	14.0%	14.6%	14.2%	14.1%	13.9%	14.0%	13.9%

Land Use Change	1986 - 2020
Agriculture	- 38.1%
Barren	- 17.6%
Forest	- 8.6%
Urban	+ 17.9
Water	+ 10.9
Wetlands	- 0.7

Land Use / Land Cover Definitions (1)

Urban: Developed land - residential, commercial, service, institutions, industrial transportation, utilities. Developed recreation (parts of parks, educational facilities, private recreation, e.g. golf courses). Includes large landscaped lawns in corporate business parks, service centers and residential areas.

Agriculture: All land associated with agricultural production (all crops, pasturelands, grazing lands, orchards, vineyards, nurseries and other horticultural areas, associated farmsteads, barns, stables, corrals, etc.).

Forests: All upland areas covered by woody vegetation, including early stage forest succession areas.

Water: Tidal and non-tidal water bodies. In Morris County, this includes freshwater lakes, ponds, reservoirs, rivers and streams greater than 80 feet in width (smaller sections are mapped separately).

Wetlands: Where water table is at, near or above the soil surface a significant time of the year, including all wetland types, e.g. bogs, swamps, wet meadows, forested wetlands, etc.

Barren: Contain a general lack of significant vegetative cover; include both naturally and artificially created areas (where vegetation has been removed). Cleared but undeveloped urban lands, transitional areas, mines, dumps, and quarries are included.

(1) The six categories included represent the six general categories that are part of the Anderson classification system, and which are represented in the New Jersey landscape. These are, in numerical order, **URBAN LAND (1000)**, **AGRICULTURE (2000)**, **FOREST (4000)**, **WATER (5000)**, **WETLANDS (6000)**, and **BARREN LAND (7000)**. A full description of each category and the specific codes used to develop this mapping can be found at <https://www.nj.gov/dep/gis/dig/download/metadata/lulc95/categories.htm>

(2) Most current NJDEP Land Use Land Cover information as of January 2020.

(3) Increases in the water body category are likely a result of several factors. These include, but may not be limited to: 1) reclassification of barren lands in quarries to water, 2) wetter wetlands areas during later flyovers, 3) misclassification of lakes due to cloud cover, 4) creation of new detention ponds / increase in size of ponds at farms / housing complexes/ golf courses, 5) bridges over rivers/streams previously classified as urban, now classified as water and 6) general improvement of interpretative technology